



SIMPLE LIFE

SIMPLE LIFE



Sycamore Drive, Normanton

£1,095 PCM

Situated near the town of Normanton, Ashfield Park is a brand new development of 72 2 & 3 Bedroom homes with something for everyone.

Introducing the Don, a lovely two bedroom home, with something to offer for all. On the ground floor there is an open plan kitchen, living and dining area creating an easy flow from your front door to the back of the property.

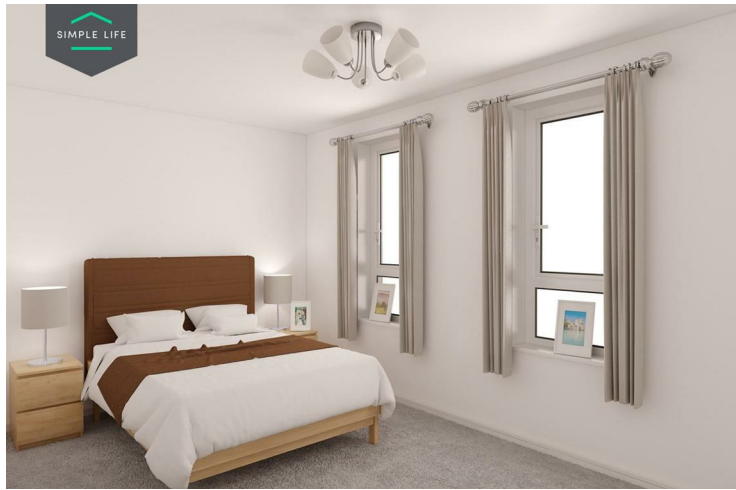
The living/dining area features a pair of French windows leading to your garden making this a beautiful, light filled space. This floor also benefits from a downstairs cloakroom and a handy storage cupboard. Upstairs, there are two bright and spacious bedrooms as well as a stylish family bathroom.

The master bedroom boasts a little more floor space as well as a fitted wardrobe whilst the second bedroom includes a built-in cupboard for tidying away those bits and bobs.

Commuting couldn't be any easier with Normanton railway station directly opposite the site providing access to Leeds, Sheffield and York. For those who choose to drive, you will be well connected by the M62 only 2 miles away, offering further access to Hull and west towards Leeds, Greater Manchester and Merseyside.

Deposit £1,260
Unfurnished
Council tax: B
Available 5th June 2025





Key Features

- Car Parking Space
- Dishwasher
- Washing/drying machine
- Carpets up the stairs and in the bedrooms
- Blinds in the bedrooms
- Security Alarm
- Fridge-freezer
- Modern kitchen worktops and units
- Private back garden

Location

